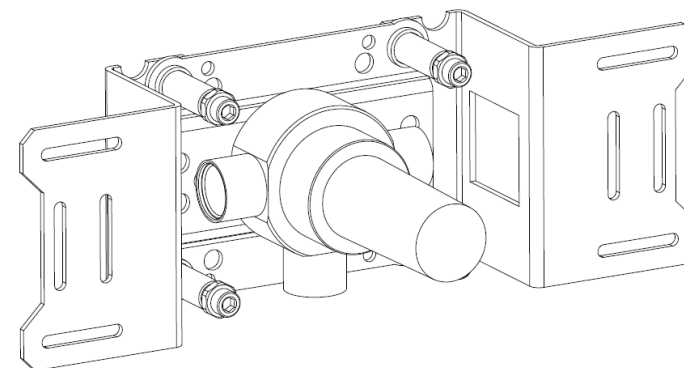


John Pawson
by
COCOON



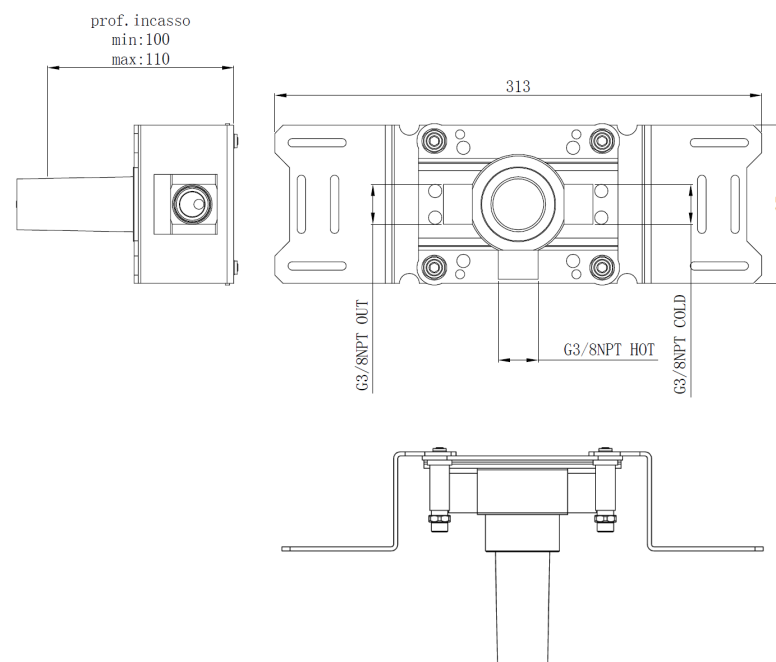
BOX-11-USA



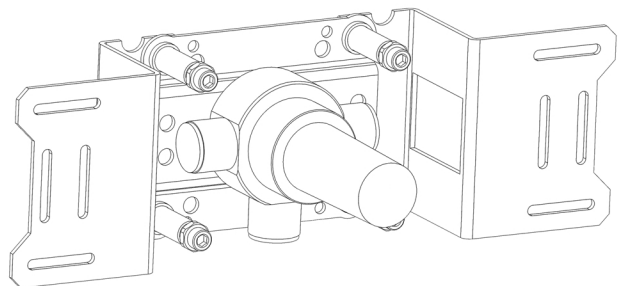
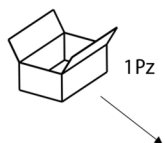
Please ensure you comply with the following instructions to optimise performance of the mixer:

- All pipework must be thoroughly flushed prior to installation
- For USA installation, please fix the USA NPT adapters on top of the pre-installed water connections
- Always first test the system with water pressure before closing the walls
- Optimal water pressure 3 BAR / temperature should not exceed 65°C/149°F
- Please read all installation instructions carefully

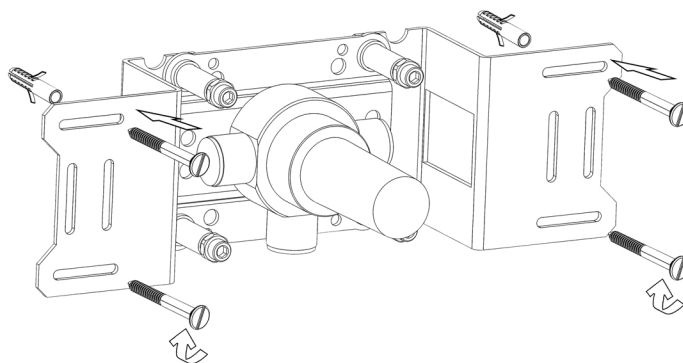
Failure to comply with manufacturers recommendations will void warranty



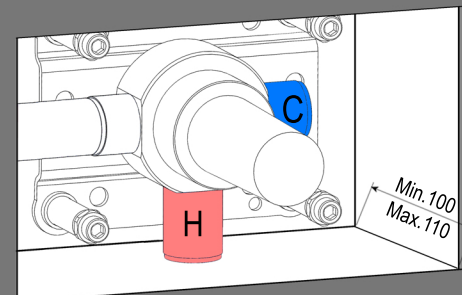
1



2



3

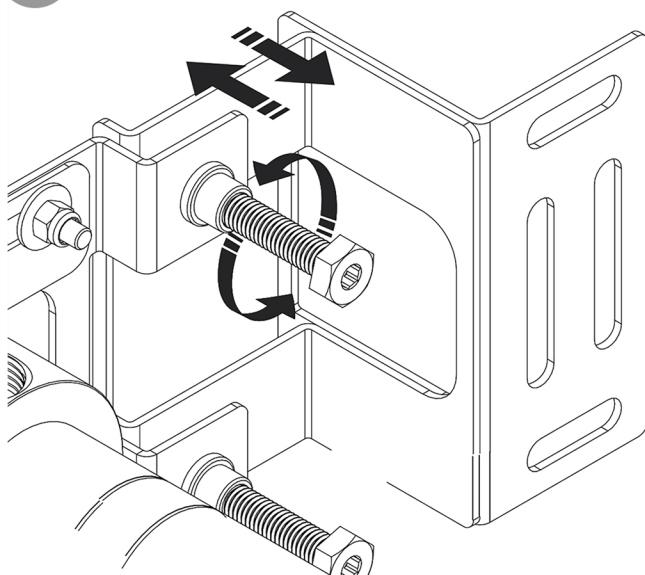


Depth Min. 100 Max. 110 finished surface

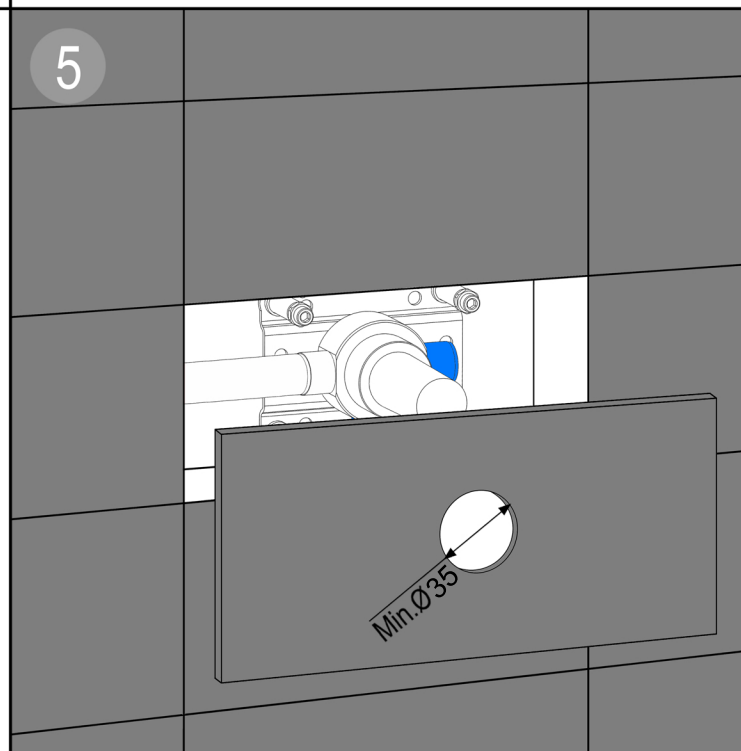


Connect and test the plant
(3bar)

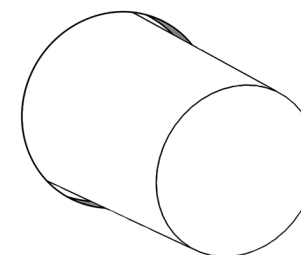
4



5



6



BOX - 11